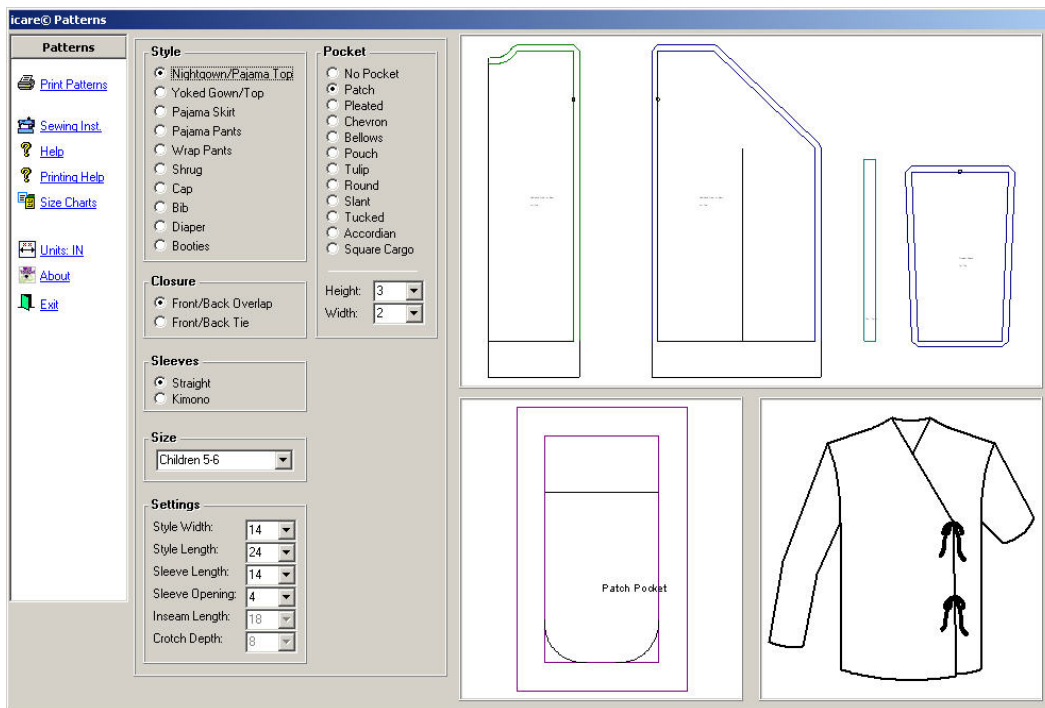




Gowns, Pajamas, and Accessories for Patient Medical Care

The purpose of the iCare sewing patterns program is to provide custom-sized sewing patterns for hospital gowns, pajamas, and accessories for medical care. This program is provided free of charge to anyone who wishes to sew garments for non-profit and charitable purposes. Patterns printed from this program and garments made from these printed patterns may not, under any circumstances, be sold to anyone for any reason without express written permission from Wild Ginger Software, Inc. These patterns are the copyrighted property of Wild Ginger Software, Inc. The iCare sewing patterns program is distributed under license by Wild Ginger Software, Inc. Installation and use of this program implies acceptance of the terms of this license.



Nightgown/Pajama Top: The nightgown/pajama top can be made long for a nightgown or short for a pajama top, as desired. The gown can be created with a surplice overlap opening and tied to the side or without the overlap and tied in the center of the garment. The garment can be worn with the opening in the front or the back. This style can be made with straight or kimono sleeves.

Yoked Nightgown/Top: The yoked gown/top has a v-neckline and a yoke styleline placed just below the underarm area. The yoked gown has a kimono sleeve. The lower half of the garment is wrapped across the front and back for both modesty and easy access.

Pajama Skirt: The pajama skirt has a casing for a drawstring or elastic, as desired. The pajama skirt can be created long or short, as desired.

Pajama Pants: The pajama pants have a casing for a drawstring or elastic as desired. They can be created long or short, as desired. Velcro or snaps can be used to close the sideseams.

Wrap Pants: The wrap pants are open on both sides. The back of the pants wraps toward the front of the body and ties at the front waistline. The front of the pants wrap over the back at the sideseams and ties at the back waistline. Ties can also be added at the hemline to tie the pants at the ankles, if desired.

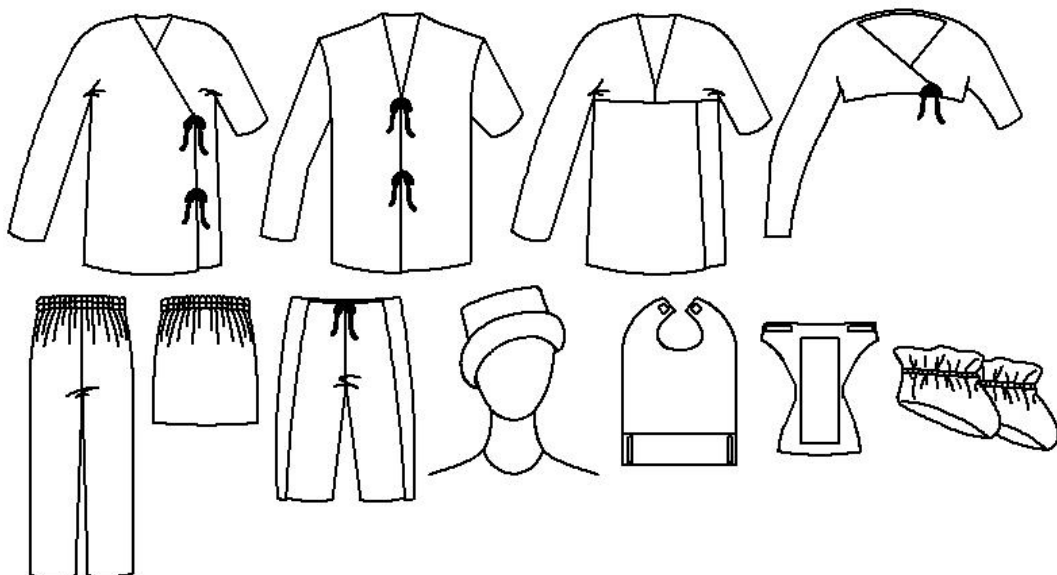
Shrug: The shrug is a short kimono-sleeve garment with a surplice overlap that is tied at the side front. It can be sewn from polar fleece for warmth or stretch knit fabrics.

Cap: The cap has a circular crown and wide band that can be turned up. It should be sewn from polar fleece or stretch knit fabrics.

Bib: The bib wraps around the neckline to velcro at the center back. It has a pocket at the lower edge that turns up and is secured with velcro. The bib can be cut short for babies and toddlers or longer for adults, as needed.

Diaper: The diaper is a simple cloth diaper wrapped through the legs and secured with velcro. A pattern for a soaking pad is also included.

Booties: The booties can be drafted for both children and adults and sewn from polar fleece or stretch knits. Elastic is placed around the ankles to hold the booties in place. Measure the length and width of the foot and input those measurements for the style width and style length.



Children's Sizes	1-2	3-4	5-6	6X-7	8-10	12-14
Gown/Top Width	11 (28)	12 (30)	14 (35)	15 (38)	16 (40)	17 (43)
Gown Length	20 (50)	22 (55)	24 (60)	26 (65)	28 (70)	30 (75)
Top Length	14 (35)	15 (38)	16 (40)	18 (45)	20 (50)	22 (55)
Inseam Length Long	13 (33)	15 (38)	18 (45)	21 (53)	24 (60)	27 (68)
Inseam Length Short	4 (10)	5 (12)	6 (15)	7 (18)	8 (20)	9 (23)
Crotch Depth	6 (15)	7 (18)	8 (20)	8 (20)	9 (23)	10 (25)
Long Sleeve Length	12 (30)	13 (33)	14 (35)	16 (40)	18 (45)	20 (50)
Short Sleeve Length	4 (10)	4 (10)	5 (12)	5 (12)	6 (15)	7 (18)
Sleeve Opening	3 (8)	3 (8)	4 (10)	4 (10)	5 (13)	5 (13)

Women's Sizes	XS	S	M	L	XL	XXL
Gown/Top Width	18 (45)	19 (48)	21 (53)	23 (58)	26 (65)	28 (70)
Gown Length	40 (100)	40 (100)	41 (103)	41 (103)	42 (105)	43 (108)
Top Length	22 (55)	22 (55)	24 (60)	24 (60)	25 (63)	26 (65)
Long Inseam Length	27 (68)	28 (70)	28 (70)	29 (73)	30 (75)	32 (80)
Short Inseam Length	9 (23)	9 (23)	9 (23)	10 (25)	10 (25)	11 (28)
Crotch Depth	9 (23)	9 (23)	10 (25)	10 (25)	11 (28)	12 (30)
Long Sleeve Length	20 (50)	20 (50)	21 (53)	21 (53)	22 (55)	22 (55)
Short Sleeve Length	5 (13)	5 (13)	6 (15)	6 (15)	7 (18)	7 (18)
Sleeve Opening	6 (15)	6 (15)	7 (18)	7 (18)	8 (20)	8 (20)

Men's Sizes	XS	S	M	L	XL	XXL
Gown/Top Width	21 (53)	22 (55)	23 (58)	24 (60)	26 (65)	30 (75)
Gown Length	42 (105)	42 (105)	43 (108)	43 (108)	44 (110)	44 (110)
Top Length	24 (60)	24 (60)	26 (65)	26 (65)	27 (68)	28 (70)
Long Inseam Length	28 (70)	29 (73)	29 (73)	30 (75)	31 (78)	32 (80)
Short Inseam Length	9 (23)	9 (23)	9 (23)	10 (25)	10 (25)	11 (28)
Crotch Depth	10 (25)	10 (25)	11 (28)	11 (28)	12 (30)	13 (33)
Long Sleeve Length	22 (55)	22 (55)	23 (58)	23 (58)	24 (60)	24 (60)
Short Sleeve Length	6 (15)	6 (15)	6 (15)	7 (18)	7 (18)	7 (18)
Sleeve Opening	7 (18)	7 (18)	8 (20)	8 (20)	9 (23)	10 (25)

Children's Booties	1-2	3-4	5-6	6X-7	8-10	12-14
Foot Length	3 (8)	4 (10)	5 (13)	6 (15)	7 (18)	8 (20)
Foot Width	1 (3)	1 (3)	2 (5)	2 (5)	3 (8)	3 (8)

Women's Booties	3-4	5-6	7-8	9-10	11-12	13-14
Foot Length	8 (20)	9 (23)	10 (25)	11 (28)	12 (30)	13 (33)
Foot Width	3 (8)	4 (10)	4 (13)	5 (13)	5 (13)	6 (15)

Men's Booties	3-4	5-6	7-8	9-10	11-12	13-14
Foot Length	9 (23)	10 (25)	11 (28)	12 (30)	13 (33)	14 (36)
Foot Width	4 (10)	4 (10)	5 (13)	5 (13)	6 (15)	6 (15)