

# Summer Dress with Center Front Pleat

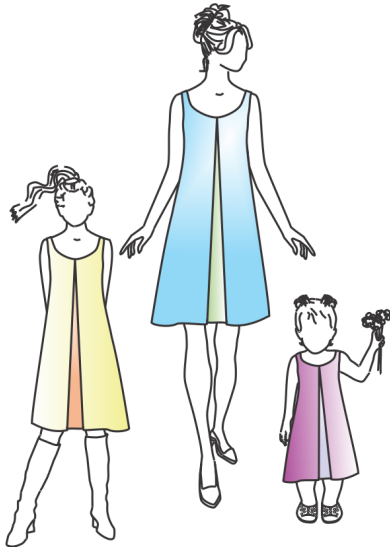
© Wild Ginger Software, Inc.  
Fashion Design and Sewing Pattern Software  
[wildginger.com](http://wildginger.com)



## Center Front Pleat Dress

In celebration of Mother's Day, our featured style in this volume is a pretty, breezy summer mother and daughter dress. This project is perfect for beginners just learning to use the PatternMaster Pattern Editor. This style also makes a great maternity dress.

This style features a center front contrasting pleat. This technique can be used with many of the PatternMaster silhouettes and necklines in all of the PatternMaster programs. The separate pleat can be created in Pattern Editor or with a pencil and ruler.



Center Front Pleat Dress

To recreate our mother/daughter style choose the following PatternMaster options. These options can be chosen in Boutique, Child's Play, and Knits.

- Boutique: Sheaths - sleeveless
- Knits: Tops/Sheaths/Jackets - sleeveless
- Child's Play: Dresses - sleeveless and dress length
- Neckline - front and back scoop neck
- Closure - front zipper
- Waist Fit - unfitted
- Hemline Sweep - flared
- Darts - none
- Neckline Shape - reshape front and back neckline, if desired
- Dress length - set as desired
- Front and back neck depth and neck width - set as desired (just make sure the neck is wide enough and low enough to go over your head. We chose a front and back neck depth of 5 inches (12 cm) and a neck width of 2 inches (5 cm).

### Save the Style

1. Save the style as Center Front Pleat Dress. Your patterns should look something like those in Figure 1.
2. Open the patterns in the Pattern Editor.

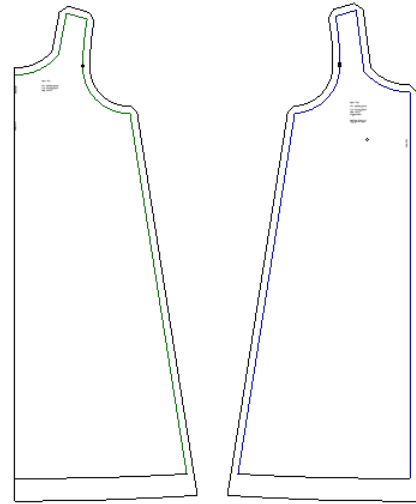


Figure 1. Patterns

### Make the Patterns

To make the center front pleat pattern:

1. To make sure your patterns not grouped, choose Select All (SA) and then choose Ungroup Objects (Ctrl U) from the Utilities menu.
2. Select the lower neckline curve and center front line as shown and choose Copy (CO) from the Tools menu (Fig. 2).
3. Make 1 copy of the selected objects and move them to the right of original front dress pattern to make the center pleat pattern.

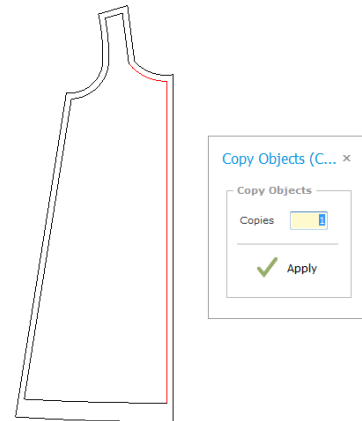


Figure 2. Copy neckline and center front

4. Select the neckline curve and choose Locate Points (LP) from the tools menu and SNAP to the neckline/center front intersection.
5. Enter 2 (5 cm) for the distance and press Apply (Fig. 3).
6. Choose Line (LI) from the Create menu and SNAP with the right mouse button to the point just placed on the neckline curve as shown in picture 4 (Fig. 4).
7. Drag the mouse straight down and CLICK to place the second point of the line as shown in picture 4 (Fig. 4).
8. Choose Line (LI) and SNAP to the bottom point of the vertical line as shown in picture 4 (Fig. 4).

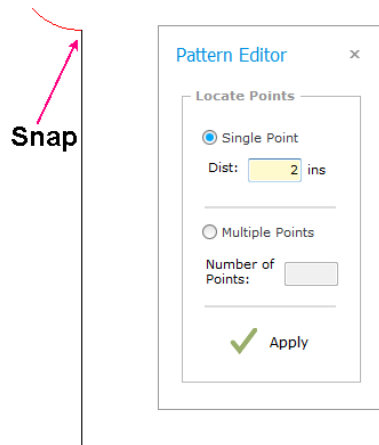


Figure 3. Locate point on neckline

9. Drag the mouse straight to the left and CLICK to place the second point of the line as shown.
10. Choose Intersect (IN) from the Tools menu and trim the line just drawn to the hemline as shown in picture 5 (Fig. 4).
11. Repeat Intersect to trim the hemline to the line just drawn.
12. Repeat Intersect to trim the neckline curve to the vertical line just drawn as shown in picture 5 (Fig. 4).
13. Select and delete the point that was placed with Locate Points.
14. Choose Line (LI) and draw two short lines extending exactly vertically down from the hemline of the center pleat pattern as shown in picture 6 (Fig. 4). These lines will be used to mirror objects.
15. Select all of the objects for the center pleat section except for the two short lines just drawn as shown in picture 7 (Fig. 4) and choose Mirror (MI) from the tools menu.
16. CLICK on left short line below the hemline.

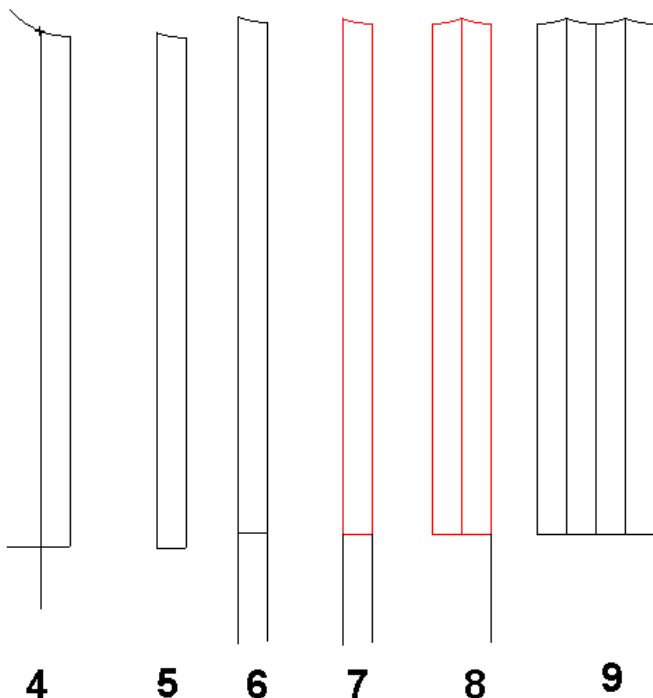


Figure 4. Pictures 4 - 9

17. Select all of the objects for the center pleat section except for the two short lines just drawn as shown in picture 8 (Fig. 4) and choose Mirror (MI) from the tools menu.
18. CLICK on left short line below the hemline.
19. Your pattern should now look like the pattern in picture 9 (Fig. 4).
20. Choose Offset (OF) from the Tools menu and offset lines and arcs the distance of the seam allowance on the left, right, and top of the center pleat pattern as shown in picture 10 (Fig. 5) below. Offset a line down from the hemline the distance of

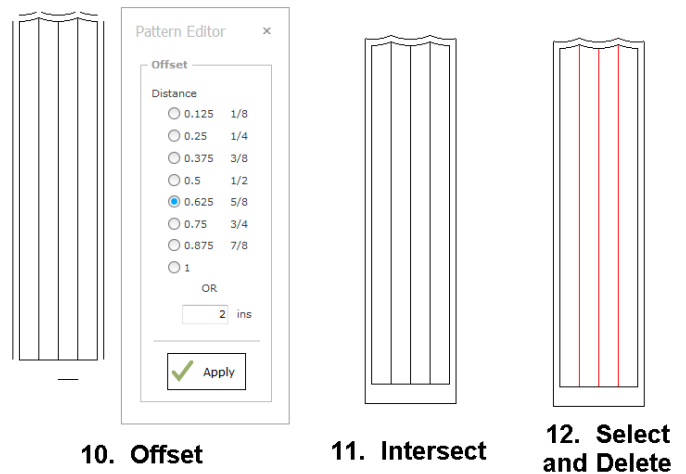


Figure 5. Pictures 10 - 12

- the hem allowance as shown.
21. Choose Intersect (IN) from the Tools menu and trim the objects as shown in picture 11 (Fig. 5).
  22. Click to select each of the three lines as shown and press the Delete key to delete the extra lines as shown in picture 12 (Fig. 5).
  23. Choose Intersect (IN) and extend the three center foldlines to the seam allowance and hem allowance.
  24. Select the three lines shown in Figure 6 and choose Change Object Settings (CH) from the Utilities menu.
  25. Check the Style check box and choose one of the dotted/dashed styles to denote the pleat foldlines.

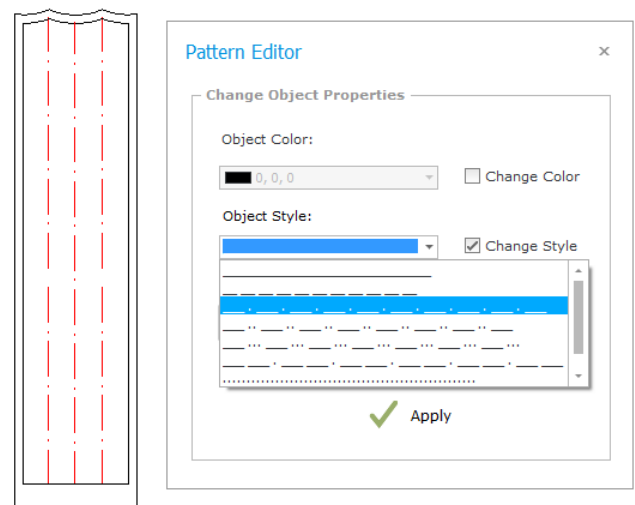


Figure 6. Change object settings

26. Choose Text (TE) from the Create menu and CLICK inside the pleat section.
27. Enter the text as shown below and press Apply (Fig. 7).
28. Make sure to save your patterns as you go.

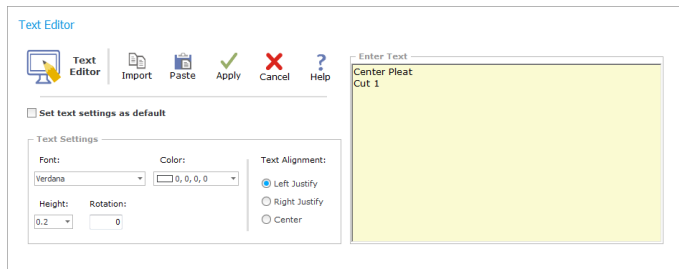


Figure 7. Add the text

### Print the Patterns

1. To print the patterns, select each pattern one by one and choose Group (CTRL G) from the Utilities menu.
2. Choose Print (FP) from the File menu and print the patterns.

### Sew the Center Front Pleat

To sew the front pleat to the front dress pattern, follow the steps below.

1. With RIGHT sides together, pin the center front pleat section to the dress front pattern along the center front lines of the right and left front patterns and stitch (Fig. 8).
2. Trim the seam allowances and finish as desired. Press the seams away the center front pleat and toward the right and left fronts.
3. With RIGHT sides together, fold the center front pleat in half along the pleat center foldline matching the stitching lines on the right and left fronts (Fig. 8).
4. Baste along the center front stitching lines.
5. Pull the pleat apart and press along the two outside pleat foldlines so that the center line of pleat is directly on top of the basting line.
6. Match the neckline of the pleat to the right and left front neckline curves. Baste along the neckline to hold the pleat in place (Fig. 9).
7. Remove the basting stitches.
8. Complete the garment according to the guide sheet.

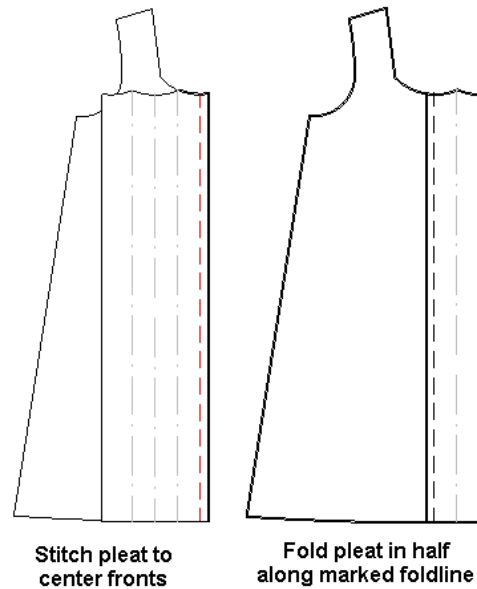


Figure 8. Stitch the pleats

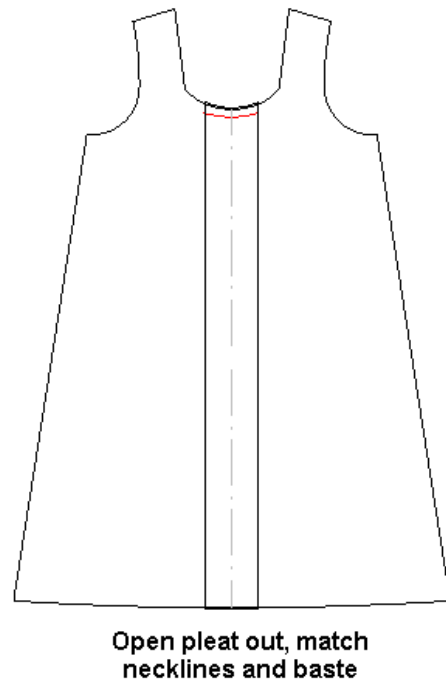


Figure 9. Baste along the neckline